



VALORIANI

UFFICIO TECNICO

DIS.

OT-100

DENOMINAZIONE

FORNO MOD. 100 OT

Appartenenza

DATA

VESUVIO

04 - 2012

Manifold \varnothing
mm. 200Termal power
KW 25Weight
kg. 1.000

Model OT 100:

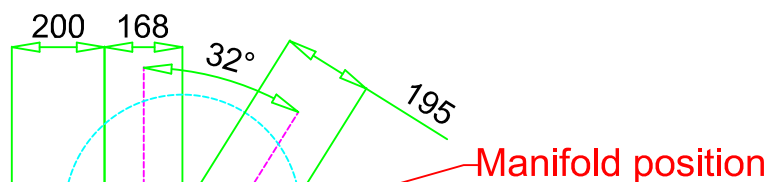
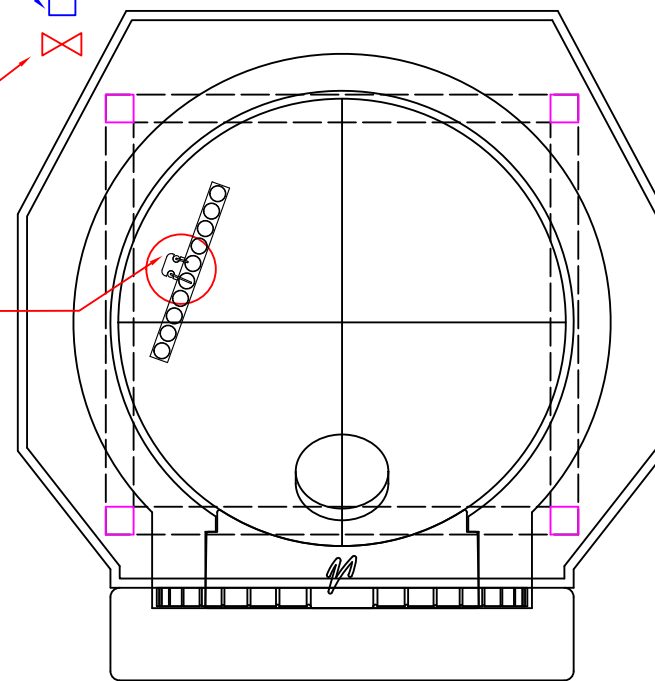
Temperature of use	= 350/400°C
Diameter manifold	= \varnothing 200 mm.
Flue gas temperature in manifold	= 195/220°C
extraction volume gas flue required	= Nmc/h 210/240

Electrical power supply 220 v 50/60hz

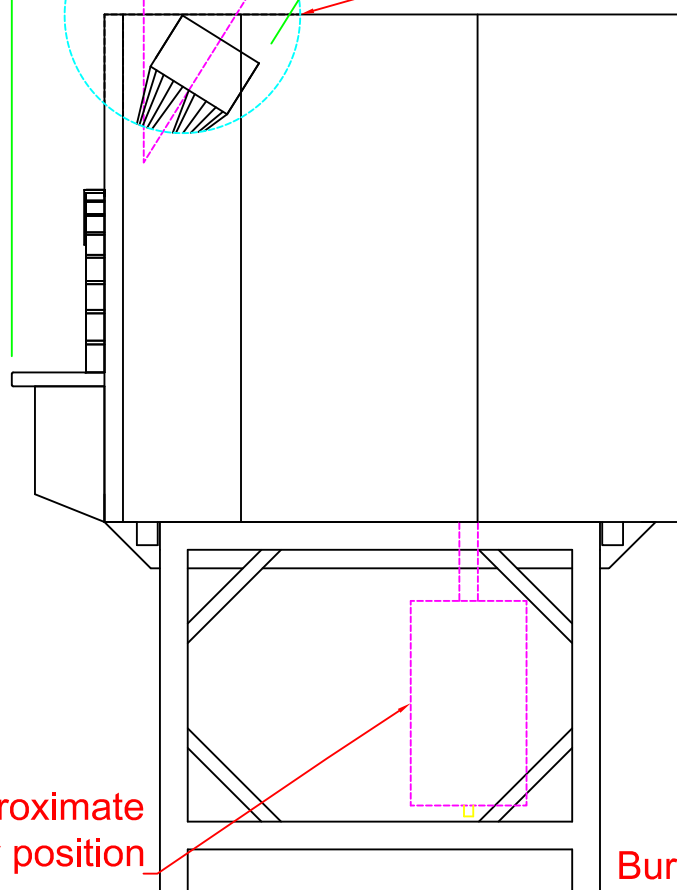
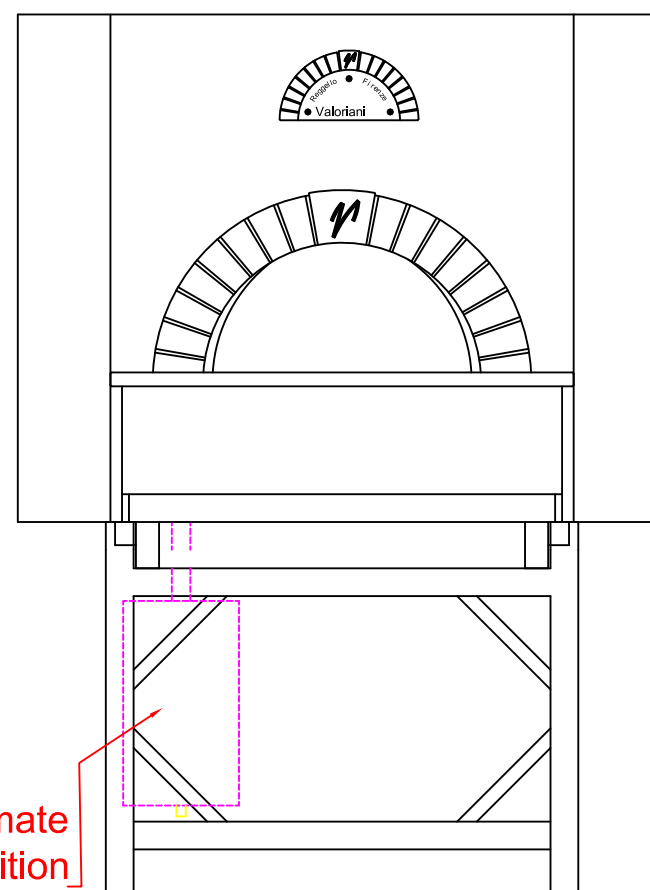
LPG or NG supply max potential 25 KW
manual valve closing 1/2" positioned to 30
cm from the ground and at a
max distance of 100 cm from the burner

Internal position Burner

Ps: these notes are valid for burner
positioned to the right and to the left
side.



Manifold position

Approximate
Burner body positionApproximate
Burner body position

NB: I pesi e le misure sono indicativi e possono subire variazioni senza alcun preavviso da parte della Refrattari Valoriani s.r.l.

A termini di legge ci riserviamo la proprieta' di questo disegno con divieto di riprodurlo o di renderlo comunque noto a terzo o Ditte concorrenti senza nostra autorizzazione.

The property of this drawing is strictly reserved and reproduction or issue to third party in any form is not permitted without written authority from the proprietor.